



The new degree of comfort.™



Residential Gas
Professional Classic
Ultra Low NOx Water Heaters

Professional Classic™ Ultra Low NOx gas water heaters are SCAQMD rule 1121 compliant with 10 ng/J NOx emissions

Efficiency

- .60 - .63 EF
- More hot water at a low operating cost

Performance

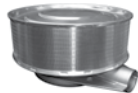
- FHR: 53 - 91 gallons for natural gas
- Recovery: 30.3 to 40.4 GPH at a 90° F rise, depending on model

Guardian System™ & Sensor

- Exclusive air/fuel shut-off device for double protection
- Maintenance free – no filter to clean
- Protective control system that disables the heater in the presence of flammable vapor accumulation

Low Emissions

- Ultra Low NOx radiant burner design
- Stainless steel construction
- SCAQMD Rule 1121 compliant
- Meets 10 ng/J NOx requirements



Self-Cleaning

- EverKleen™ patented system fights sediment build-up
- Reduces fuel costs
- Provides more hot water

Easy to Light

- No matches required

Longer Life

- Premium grade anode rod provides long-lasting tank protection

High Altitude Compliant

- All models certified up to 5,999 ft. above sea level
- 38-Gallon short model certified up to 8,400 ft. above sea level, 50-gallon tall model certified up to 10,200 ft.

Plus...

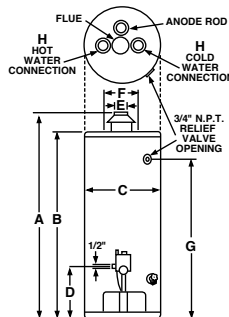
- Enhanced flow brass drain valve
- Temperature and pressure relief valve included
- Low lead compliant
- Exclusive Rheemglas® lining

Warranty

- 6-Year limited tank and parts warranty*
- With ProtectionPlus™ the 6-year limited tank warranty becomes 10-year

*See Residential Warranty Certificate for complete information

Units meet or exceed ANSI requirements and have been tested according to the AHRI Operations Manual and D.O.E. procedures. Units meet or exceed the energy efficiency requirements of NAECA, ASHRAE standard 90, ICC Code and all state energy efficiency performance criteria.



Professional Classic
Ultra Low NOx
28, 38, 48 and
50-Gallon Capacities
Up to 40,000 Btu/h
Natural Gas



TYPE	DESCRIPTION		FEATURES			ROUGHING IN DIMENSIONS (SHOWN IN INCHES)								ENERGY INFO.	
	GAL. CAP.	MODEL NUMBER	GAS INPUT IN THOUS. BTU/H NAT.	RECOVERY IN G.P.H. 90° RISE NAT.	FIRST HOUR DEL. G.P.H. NAT.	HT. TO VENT A	TANK HT. B	DIAM. C	HT. TO GAS CONN. D	VENT SIZE E	WATER CONN. CNTR. F	HT. TO SIDE T&P VALVE G	WATER CONN. SIZE H	SHIP. WT. (LBS)	ENERGY FACTOR NAT.
Tall	28	PROG28-30U RH63	30	30.3	53	58-7/8	56-1/8	16-1/2	17-1/2	3 or 4	8	50-1/8	3/4	114	0.63
Tall	38	PROG38-38U RH62	38	38.4	72	60-1/2	57-3/4	19	17-1/2	3 or 4	8	51-3/4	3/4	141	0.62
Tall	48	PROG48-40U RH60	40	40.4	91	60-5/8	57-7/8	20-1/2	17-1/2	3 or 4	8	51-3/4	3/4	163	0.60
Tall	50	PROG50-36U RH62	36	36.4	91	62-5/8	59-7/8	23	17-3/8	3 or 4	8	53-5/8	3/4	170	0.62
Short	38	PROG38S-36U RH62	36	36.4	68	51-7/8	49-1/8	21	17-1/2	3 or 4	8	43	3/4	150	0.62

Energy Factor based on D.O.E. (Department of Energy) test procedures.

In keeping with its policy of continuous progress and product improvement, Rheem reserves the right to make changes without notice.

Rheem Water Heating • 101 Bell Road
Montgomery, Alabama 36117-4305 • www.rheem.com



INTEGRATED HOME COMFORT